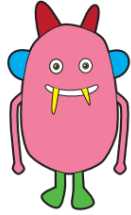


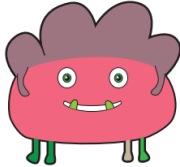
Real and Nonsense Words

whilm



whine

wheef

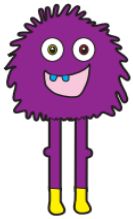


whistle

lesue



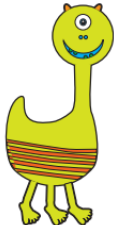
clue



hanue

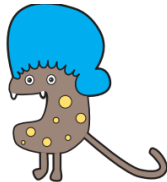
rescue

chesue



plume

jume



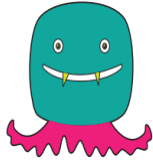
cube

splude



huge

*drume*



*trophy*

*stolpin*



*microphone*

*coyd*



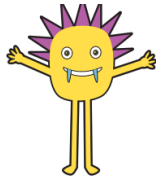
*voyage*

*moyn*

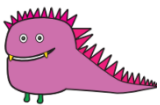


*destroy*

*soyp*



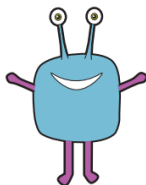
*loyal*



*koun*

*mouth*

*lound*



*around*