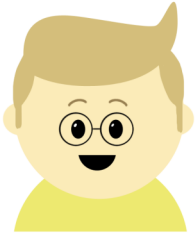


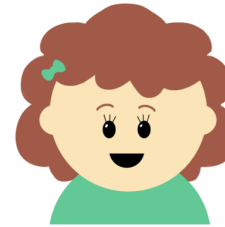


Which of the items is the odd one out? Explain why you think that. How many reasons can you find?



$$0.6 \times 0.4, \quad 0.2 \times 0.12,$$
$$1.2 \times 0.2$$

Which is the odd one out?



$$0.088, \quad 0.089, \quad 0.098$$

Which is the odd one out?

$$0.565 \quad 0.645 \quad 0.649 \quad 0.543$$

Which is the odd one out?

$$9/10, \quad 0.91, \quad 9/100, \quad 0.09, \quad 91\%$$

Which is the odd one out?

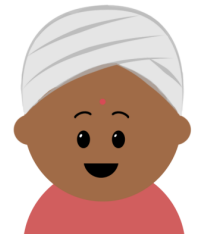
$$10.5 \times 1.5, \quad 8.75 \times 1.8,$$
$$9.85 \times 1.6$$

Which is the odd one out?



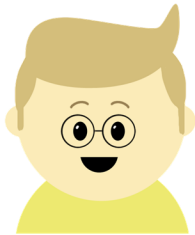
$$0.125, \quad 0.5, \quad 1.125, \quad 0.3125$$

Which is the odd one out?





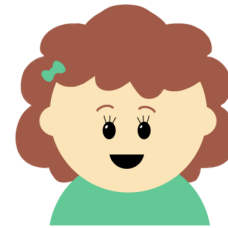
There is no specific correct answer - look for children explaining their choices.



0.6×0.4 , 0.2×0.12 , 1.2×0.2

Which is the odd one out?

Answers may include 0.2×0.12 as it gives a different answer of 0.024 compared to 0.24 or 1.2×0.2 as it contains a number other than 0 in the ones column.



0.088, 0.089, 0.098

Which is the odd one out?

Answers may include 0.098 as it has more than 8 hundredths or 0.089 as it has more than 8 thousandths.

0.565 0.645 0.649 0.653

Which is the odd one out?

Answers may include 0.653 as it can't be rounded up/down to 0.6 or 0.565 as this number has less than 6 tenths.

$9/10$, 0.91, $9/100$, 0.09, 91%

Which is the odd one out?

Answers may include 91% as it is the only percentage or $9/10$ as it does not have an equivalent within the list.

10.5×1.5 , 8.75×1.8 , 9.85×1.6

Which is the odd one out?

Answers may include 9.85×1.6 as gives a different answer of 15.76 or 10.5×1.5 as it does not contain hundredths in the first number.



0.125, 0.5, 1.125, 0.3125

Which is the odd one out?

Answers may include 0.3125 as it is not a multiple of 0.125 or 0.5 as it gives a whole number when divided by 0.25.

