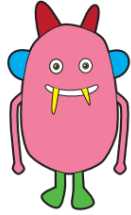


Real and Nonsense Words

quass



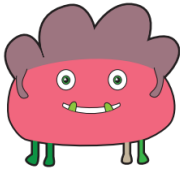
parks

glog



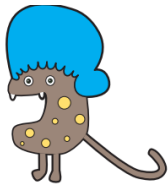
shape

bard



sing

dis



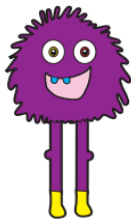
scribe



murbs

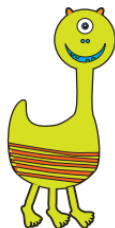
catch

splue

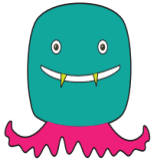


model

drefe



box



*kere*

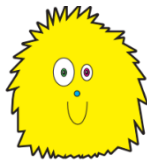
*chapter*

*gloosh*



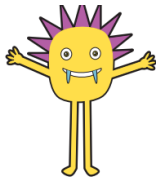
*bake*

*gair*



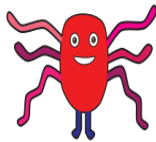
*reptile*

*pheze*



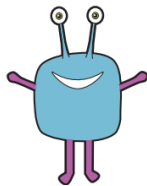
*puzzle*

*struch*



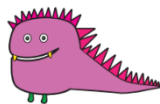
*person*

*flure*



*mighty*

*zight*



*roast*